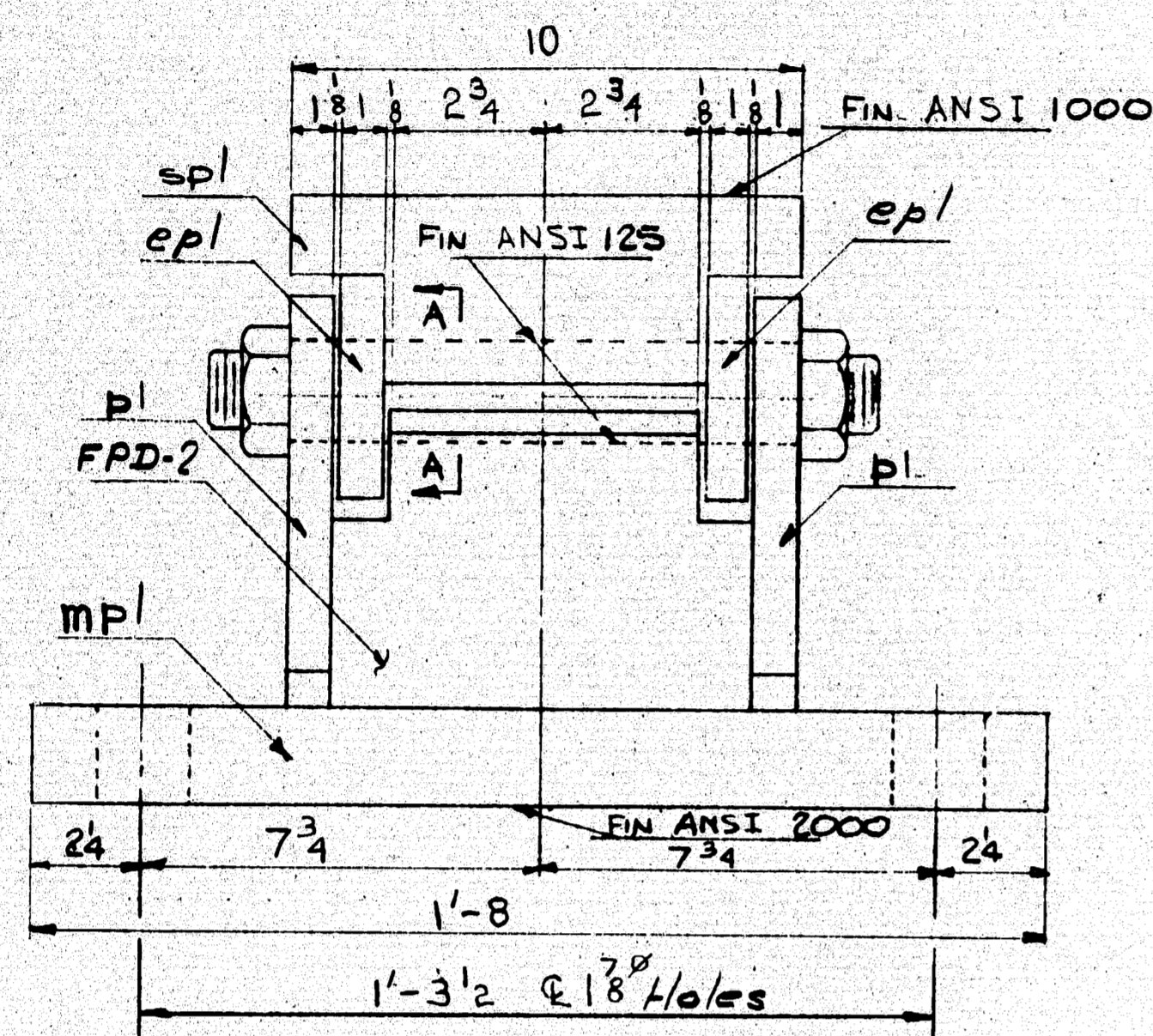


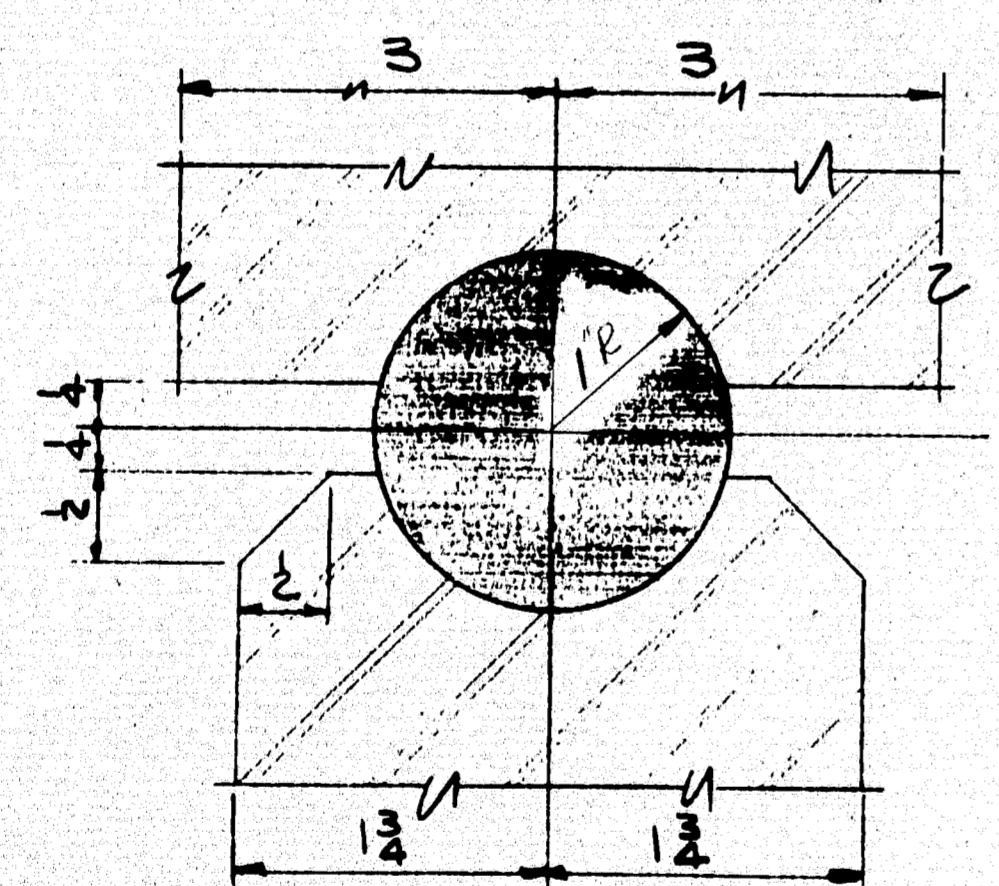
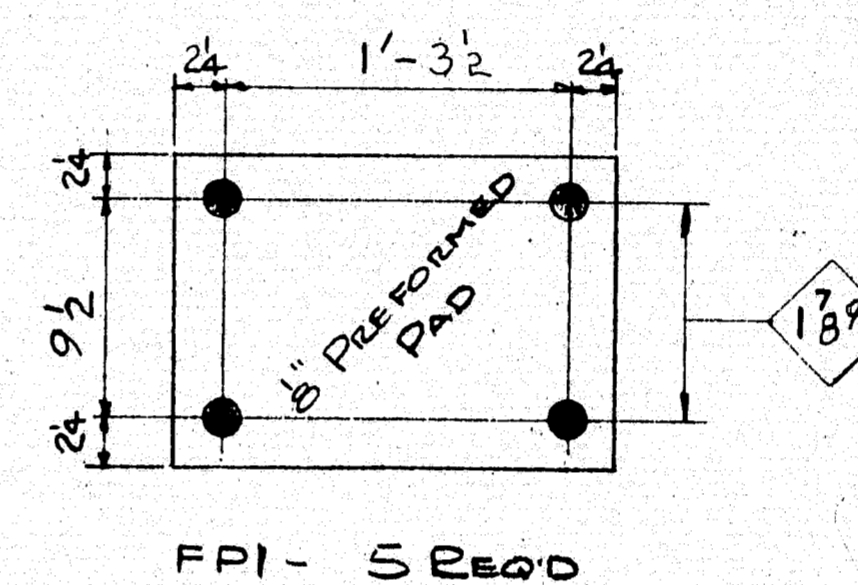
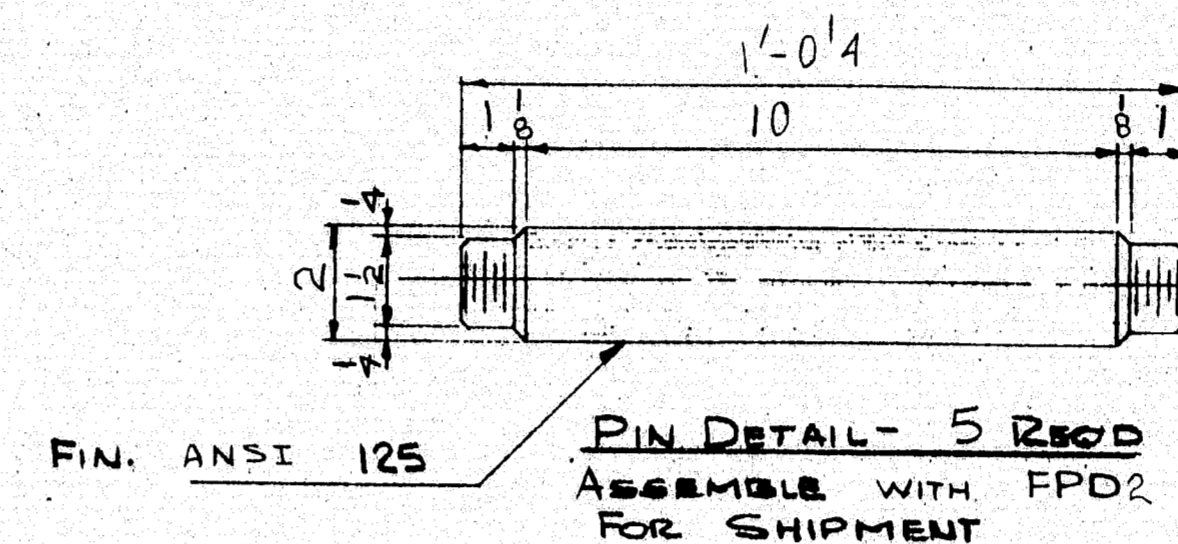
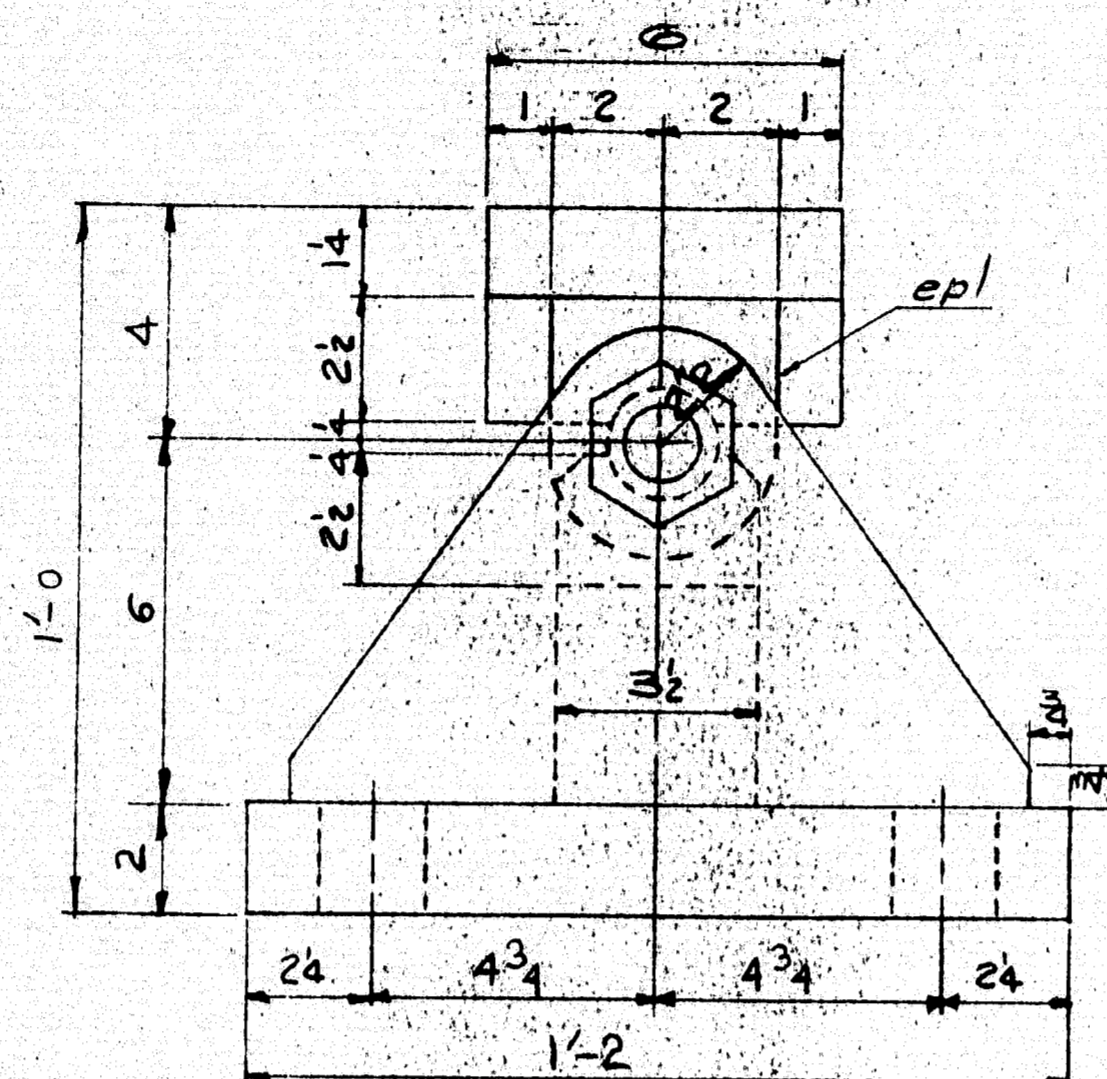
IT. NO.	504.70	BR. NO.	5550	PROJ. NO.	05-003403 (3)	
FOR APPROVAL		FOR FILES & FIELD				
FRAMING PLAN						
APPROVED: 4/22/80		Bancroft & Martin Inc. South Portland, Maine 04106 TURNERS MILL BRIDGE CUTLER, ME. CUSTOMER: DICENZO INC. DESIGNER: NEILL & GUNTER				
PRINT DIST.						
ED	3/7/80					APP.
SD	4/22/80					FAB.
ED	5/8/80					FR.F.
ES	4/22/80	5/6/80				
REV. △						
CHECKED	4/17/80	REV.				
DRAWN	2/29/80	DRG.				
		ORDER NO.	JOB NO.	DRAWING NO.	REV.	
			9-21	E-1	△	

162-83

[illegible]



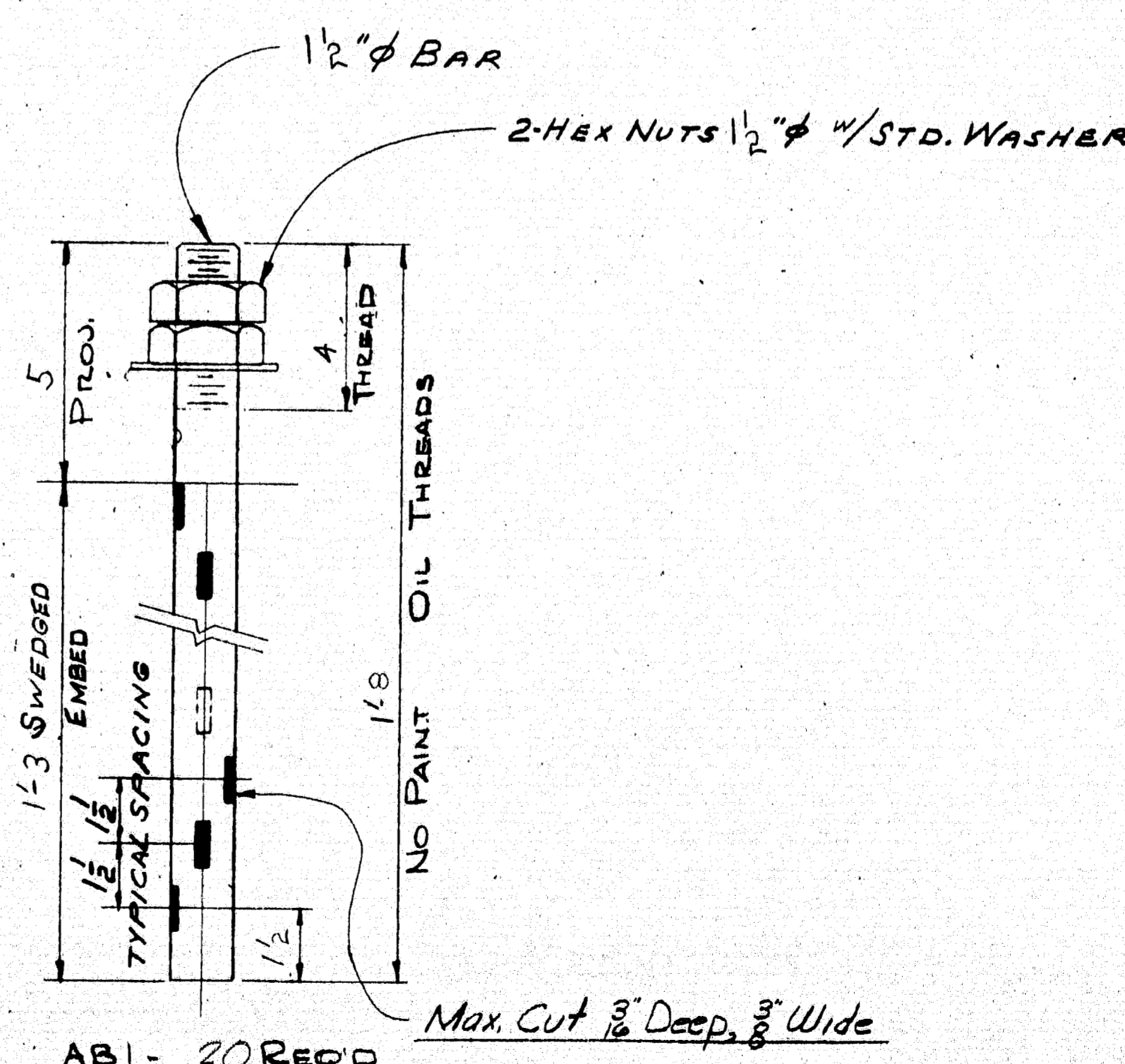
FIXED PEDESTAL - FPD-2 (5-REQ'D)
(G ABUT #2)



SECTION A-A

PIN NOTE:
THE DIAMETER OF THE PIN HOLE SHALL NOT EXCEED THAT OF THE PIN BY MORE THAN 1/50 INCH.

PAINT NOTE:
NO PAINT ON TOP OF SOLE PLATES AND 1" DOWN FROM TOP ON SIDES, COAT WITH BOILED LINSEED OIL.
NO PAINT ON SURFACES WITH ANSI 125 FINISH COAT WITH MIXTURE OF WHITE LEAD AND TALLOW.
NO PAINT ON ANCHOR BOLTS - OIL THREADS.
MASONRY PLATES SHALL RECEIVE 2 COATS OF SHOP PAINT.

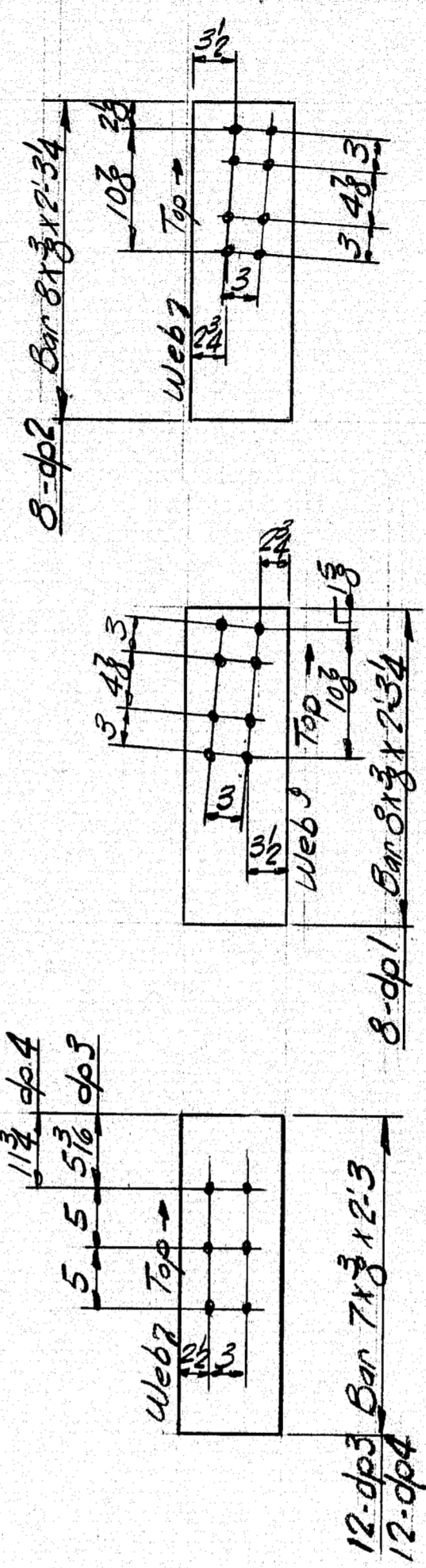
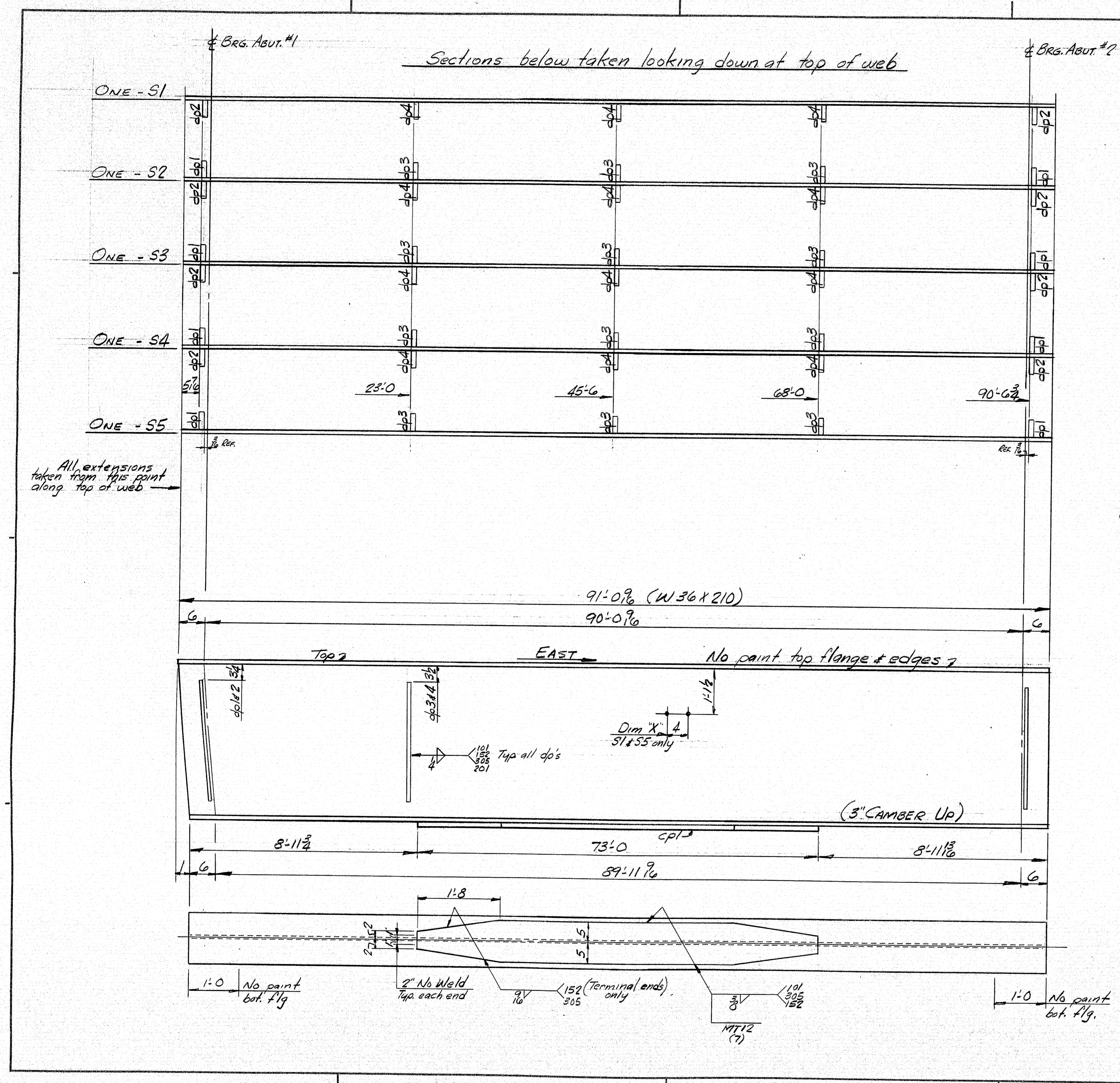


ABI-20 REQ'D

Max. Cut 1/2" Deep, 3/8" Wide

SHIP		BILL OF MATERIAL		JOB NO. 9-21		DWG. NO. 51-1	
MARK	NO.	MARK	SHAPE	LENGTH	WT.	ITEM NO.	REMARKS
	5	mp	RE 2 x 14	1.8		1/N	
	10	p	Bar 8 x 1	1.0 1/2		1/L	
	10	ep	Bar 4 x 1	0.434		1/K	
FPD-2	5		Bar 5/8 x 3/4	0.8		1/M	
	5	sp	Bar 6 x 3/4	0.10		1/L	
FPI	5		Pad 8 x 14	1.8		1/R	Preformed Pad Rag. No. 11733
	5	shop	Bar 2" x 1 1/2"			1/O	BRIDGE PIN
	10	shop	1 1/2" NUTS			1/P	RECESSED PIN NUT
ABI	20		Bar 1 1/2"	1.8		1/S	
	20	shop	1 1/2" HEX NUTS			1/T	A307
FIELD	20		1 1/2" STD WASHER			1/U	A307
ITEM NO. - 504, 70							
PROD. NO. - B-GR0304 (B)							
BR. No. 5556							
STEEL: ASTM - A36 U.N.							
WELDING ELECTRODE SEE WELDING PROCEDURES							
SHOP CONN. WELDED - 2" CONT. FILLETS PROC. 301							
FIELD CONN. WELDED							
HOLES: AS NOTED							
PAINT: Basic Lead Silico Chromate (Orange) As noted							
SPECIAL CLEANING: BLAST CLEAN SSPC-SPC							
APPROVED: 4/22/80							
PEDESTAL DETAILS FPD-2							
PRINT DIST.							
20	3/1/80	App	Bancroft & Martin Inc. South Portland, Maine 04106. JOB: TURNERS MILL BRIDGE CUTLER, ME. CUSTOMER: DICENZO, INC. DESIGNER: NEILL & GUNTER ORDER NO. JOB NO. DRAWING NO. 9-21 51-1				
30	4/22/80	Feb					
25	5/9/80	State					
20	5/9/80	Feb					
REV.	4/21/80	RHM					
CHECKED	4/21/80	RHM					
DRAWN	3/13/80	NBS					

162-85



Dim "X"

S1 & S5
2'-3
9'-3
16'-3
23'-3
30'-3
37'-3
44'-3
51'-3
58'-3
65'-3
72'-3
79'-3
86'-3
88'-6

ALL CONNECTIONS DETAILED ON THIS DRAWING REPRESENT BANCROFT & MARTIN INC. STANDARDS. IN APPROVING THIS DRAWING, FOR FABRICATION, THE ARCHITECT AND/OR ENGINEER ASSUMES THE RESPONSIBILITY FOR THE STRUCTURAL INTEGRITY OF ALL CONNECTIONS SHOWN.

SHIP		BILL OF MATERIAL		JOB NO.		DRAWING NO.		REV.	
MARK	NO.	MARK	SHAPE	LENGTH	WT.	ITEM NO.	REMARKS		
S1	1		W36x210	91' 0 7/8		2/A	3" CAMBER UP		
S2	1			91' 0 7/8					
S3	1			91' 0 7/8					
S4	1			91' 0 7/8					
S5	1			91' 0 7/8		2/A			
5	dp1		R 18x10	73' 0		2/B	C/VN		
8	dp1		Bar 8x8	2' 3 1/4		2/C	A36		
8	dp2		o.	2' 3 1/4		2/C	A36		
12	dp3		Bar 7x8	2' 3		2/D	A36		
12	dp4		o.	2' 3		2/D	A36		

HOLES ARE FOR HIGH TENSILE BOLTS. THEY ARE TO BE FREE FROM BURRS AND SHALL NOT BE PAINTED ON ANY SURFACE WITHIN 5" OF SUCH OPEN HOLES.

IT. NO. 504.70 BR. NO. 5556 PROJ. NO. RS-BR-0304(3)

FOR APPROVAL ☒ **FOR FILES & FIELD** ☒

STEEL: ASTM. ☐ A36 ☒ A572 GR1 50 ☐ A588 GR1 ☐ Unless Noted

WELDING ELECTRODE: ☐ E70 ☒ See Welding Proc. ☐ None

SHOP CONN: ☐ Bolted ☒ Welded ☐ None

FIELD CONN: ☒ Bolted ☒ Welded ☐ None

HOLES: ☐ 13/16 ☒ 15/16 ☐ Unless Noted ☐ None

PAINT: ☐ None ☐ Shopcoat ☐ Galv. After Fab. ☒ As Noted

SPECIAL PAINT: Basic Lead Silico Chromate (Orange) As noted

SPECIAL CLEANING: ☒ Blast Clean ☐ None ☐ SSPC-SP6

STRINGERS

APPROVED: 4/22/80

PRINT DIST. ☒ 3/7/80 APP. ☒ 4/22/80 FAB. ☒ 5/10/80 F&E. ☒ 4/22/80

Bancroft & Martin Inc.
South Portland, Maine 04106

JOB: TURNERS MILL BRIDGE
CUTLER, ME.

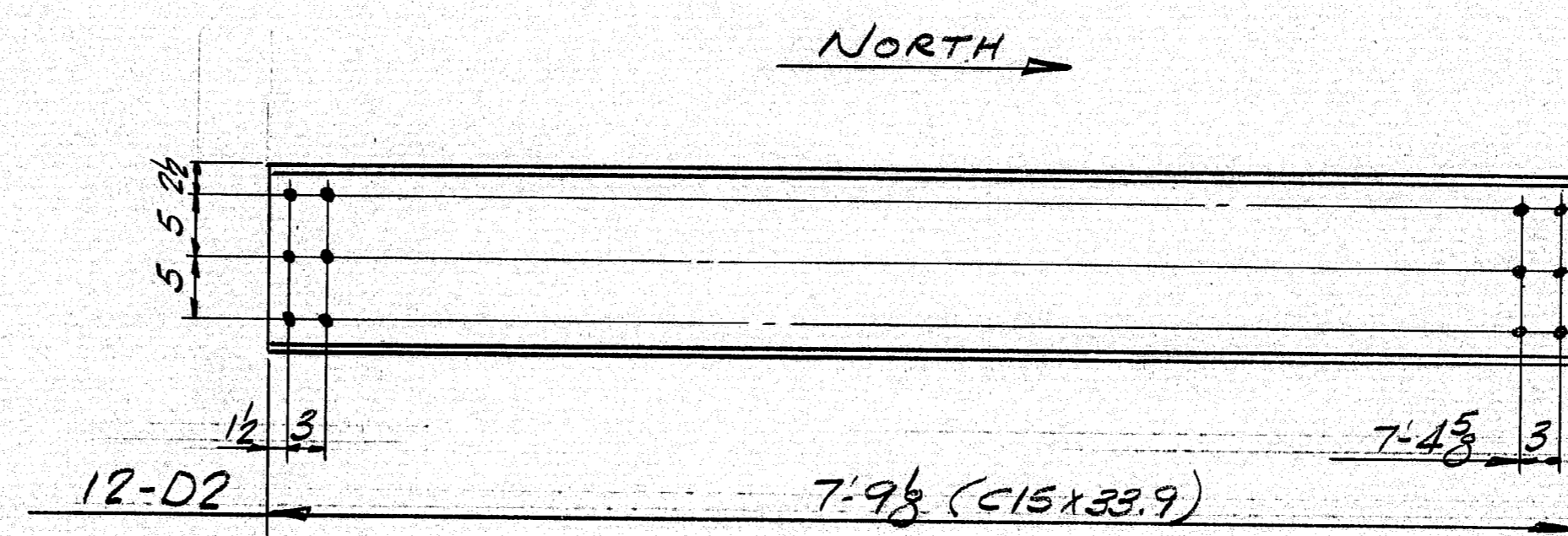
CUSTOMER: DICENZO INC.

DESIGNER: NEILL & GUNTER

ORDER NO. JOB NO. 9-21 DRAWING NO. 55-1 REV.

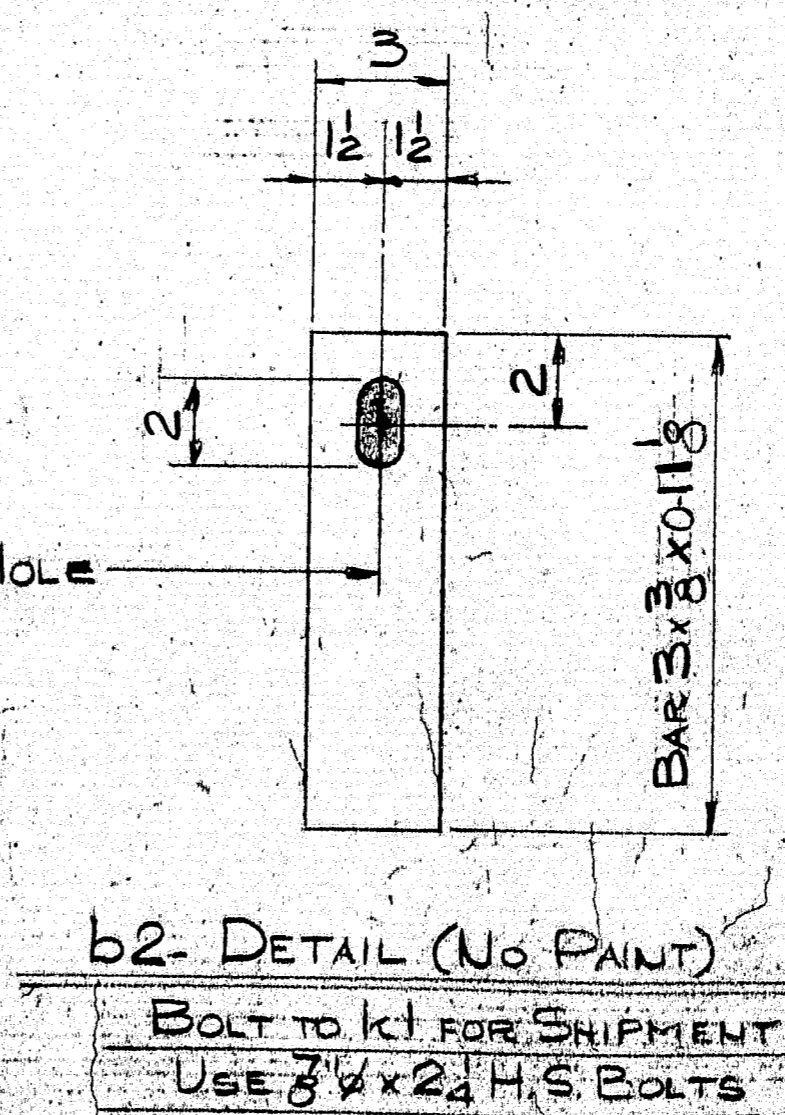
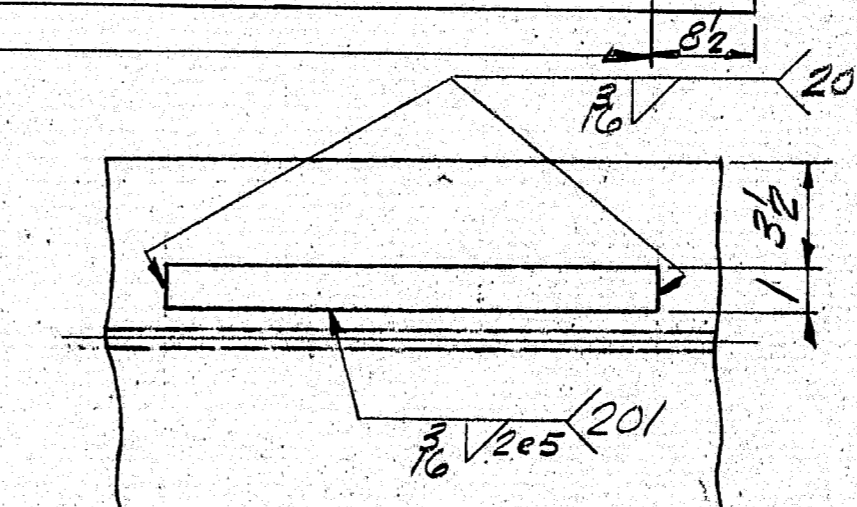
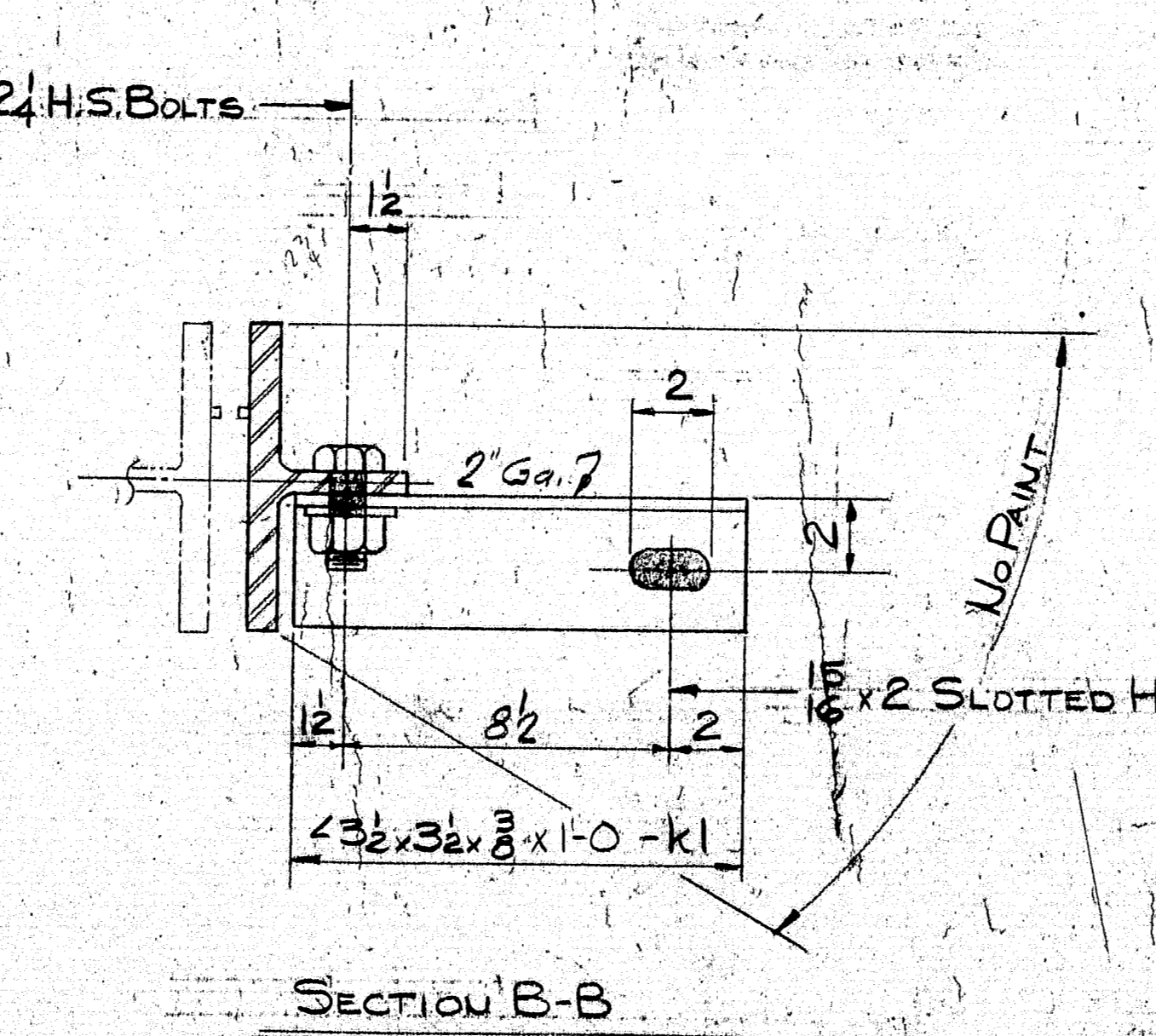
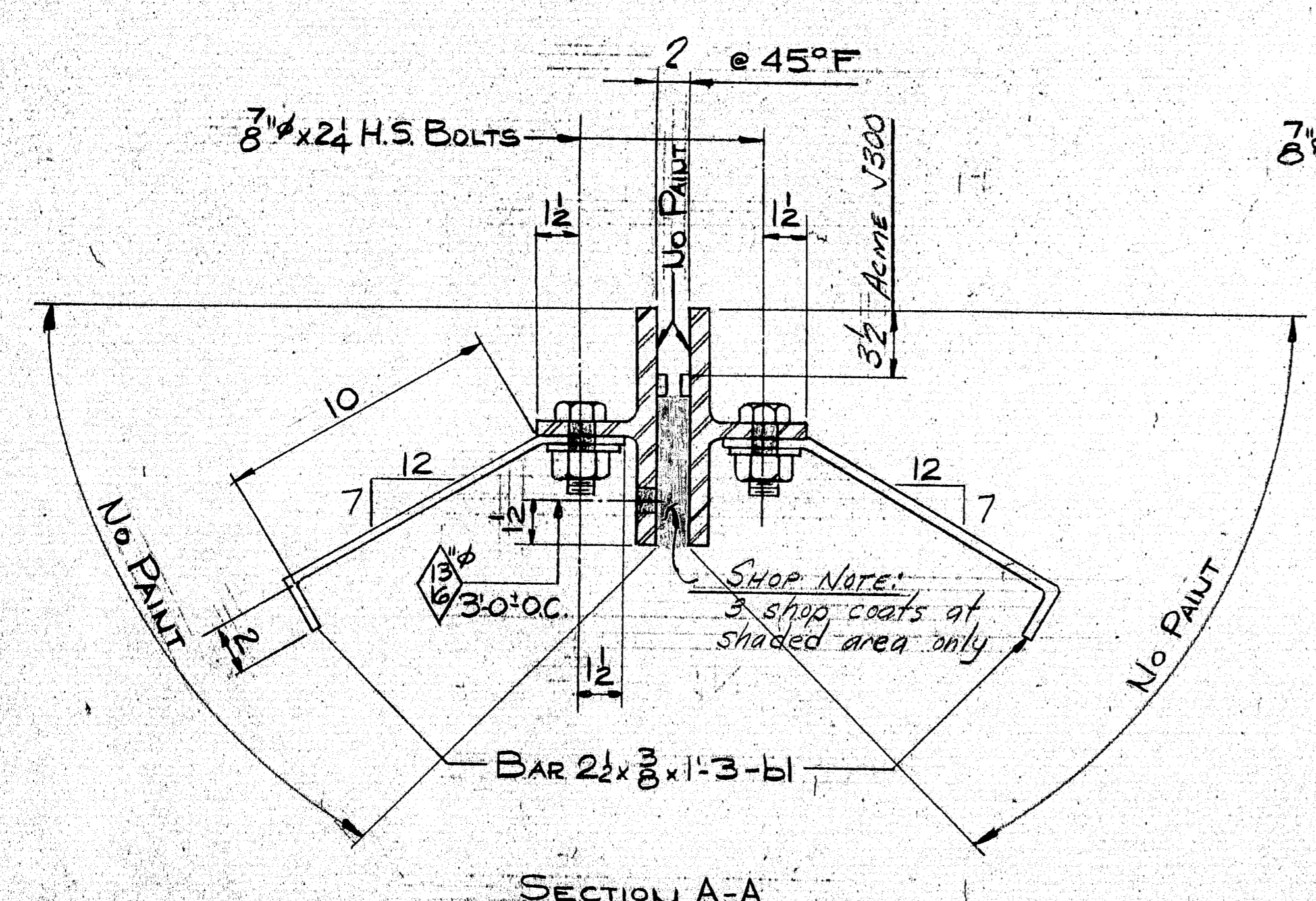
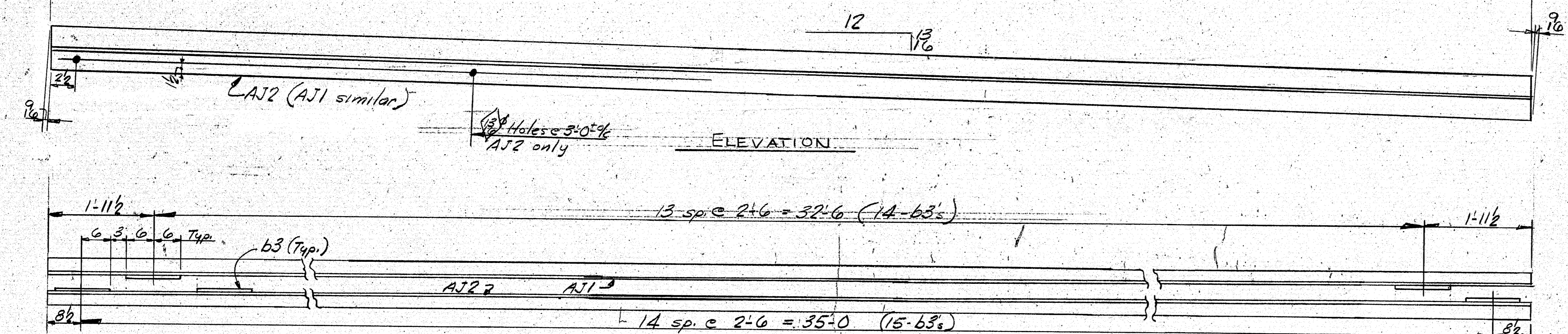
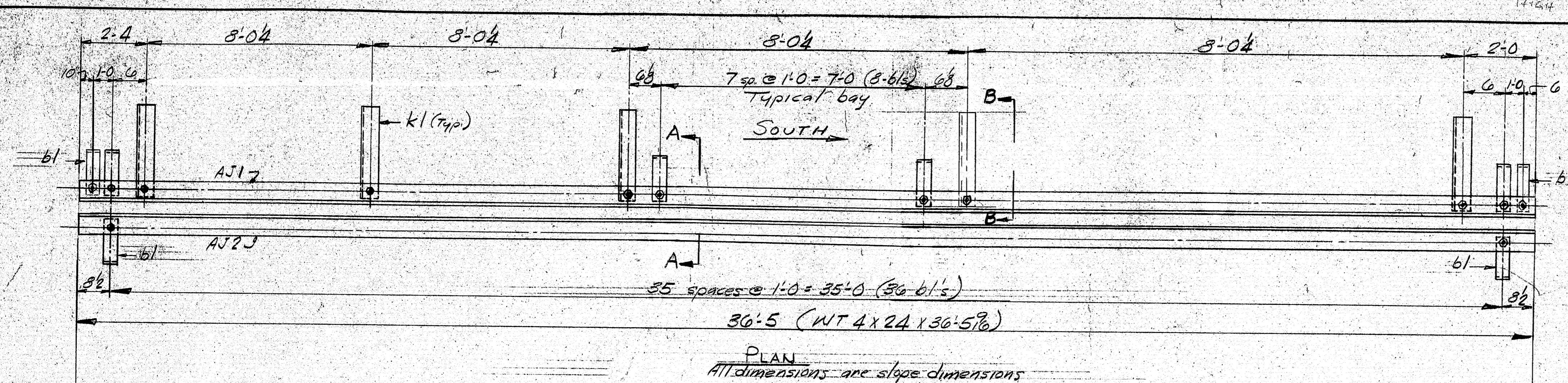
REV. CHECKED 4/7/80 RLG-DY DRAWN 3/6/80 NGA

162-87



SHIP		BILL OF MATERIAL						JOB NO.	DRAWING NO.	REV.
								9-21	56-1	△
MARK	NO.	MARK	SHAPE	LENGTH	WT.	ITEM NO.	REMARKS			
01	8		N 16 X 36	7	8 1/2	2/E				
02	12		C 15 X 33 1/2	7	9 1/2	2/F				
HOLES ARE FOR HIGH TENSILE BOLTS THEY ARE TO BE FREE FROM BURRS AND SHALL NOT BE PAINTED ON ANY SURFACE WITHIN 5" OF SUCH OPEN HOLES										
IT. NO. 504.70		BR. NO. 5556				PROJ. NO. R5-BR-0504(3)				
FOR APPROVAL [X] FOR FILES & FIELD [X]										
STEEL: ASTM. <input checked="" type="checkbox"/> A36 <input type="checkbox"/> A572 GR1 <input type="checkbox"/> A588 GR1 <input type="checkbox"/> Unless Noted <input type="checkbox"/>										
WELDING ELECTRODE: <input type="checkbox"/> E70 <input type="checkbox"/> See Welding Proc. <input checked="" type="checkbox"/> None <input type="checkbox"/>										
SHOP CONN.: <input type="checkbox"/> Bolted <input type="checkbox"/> Welded <input checked="" type="checkbox"/> None <input type="checkbox"/>										
FIELD CONN.: <input checked="" type="checkbox"/> Bolted <input type="checkbox"/> Welded <input type="checkbox"/> None <input type="checkbox"/>										
HOLES: <input type="checkbox"/> 13/16 <input checked="" type="checkbox"/> 15/16 <input type="checkbox"/> Unless Noted <input type="checkbox"/> None <input type="checkbox"/>										
PAINT: <input type="checkbox"/> None <input type="checkbox"/> Shopcoat <input type="checkbox"/> Galv. After Fab. <input type="checkbox"/> As Noted <input type="checkbox"/>										
SPECIAL PAINT: Basic Lead Silico Chromate (Orange) As noted										
SPECIAL CLEANING: <input checked="" type="checkbox"/> Blast Clean <input type="checkbox"/> None SSPC-SPO										
DIAPHRAGMS:										
APPROVED: 4/22/80										
PRINT DIST.										
2P	3/7/80	APP.	Bancroft & Martin Inc. South Portland, Maine 04106 JOB: TURNERS MILL BRIDGE CUTLER, ME. CUSTOMER: DICENZO INC. DESIGNER: NEILL # GUNTER ORDER NO. JOB NO. DRAWING NO. REV.							
SP	4/22/80	FAB.								
EP	5/6/88	E&F.								
DS	4/22/80	S&E								
REV. △										
CHECKED	4/7/80	RGM								
DRAWN	3/4/80	MGE	9-21 56-1 △							

162-88



SHIP		BILL OF MATERIAL		JOB NO. 9-21		DWG. NO. 58-1	
MARK	NO.	MARK	SHAPE	LENGTH	WT.	ITEM NO.	REMARKS
AJ1	1		WT 4 x 24	36	576	2/9	
AJ2	1		DO	36	576	2/9	
	5	K1	L 3/4 x 1/2 x 3/4	1	0	3/4	
	72	b1	Bar 2 1/2 x 3/8	1	3	2/4	
	5	b2	Bar 3 x 3/8	0	118	2/4	
	29	b3	Bar 1 x 3/8	1	0	2/5	
FIELD	1		ACME J-300	38	0	2/4	Joint 3001 REQ'D 11/23
	82	Shop	3/4 H.S. Bolt	0	24	2/4	A325 Type 1
	82	Shop	3/4 H.S. Washer	0	24	2/2	Do
ITEM NO. 504.70							
PROJ. NO. RS-BR-0304-B							
BR. NO. 5556							
STEEL ASTM. A36, U.N.I.							
WELDING ELECTRODE SEE WELDING PROC.							
SHOP CONN. BOLTED & WELDED							
FIELD CONN. WELDED							
HOLES: 1/8" & AS NOTED							
PAINT: 3-Shop Coats (Basic Lead Silica Chromate (Orange))							
SPECIAL CLEANING: BLAST CLEAN SSPC-SP6 AS NOTED							
APPROVED: 4/22/88							
ARMORED JOINTS-ABUT. #1							
PRINT DIST.							
2d	3/7/88	Appr.	Bancroft & Martin Inc. South Portland, Maine 04106				
3d	4/22/88	Eng.					
1e	4/22/88	Site					
2d	5/1/88	Rev.					
			JOB: TURNERS MILL BRIDGE				
			CUTLER, ME.				
			CUSTOMER: DICENZO, INC.				
			DESIGNER: NEILL & GUNTER				
			ORDER NO. 9-21				
			DRAWING NO. 58-1				
REV.	4/7/88	Rev.					
CHECKED	4/7/88	Rev.					
DRAWN	4/7/88	Rev.					

162-89



See State's Dwg's for location

162-90